

**SAFETY ON THIS JOB
DEPENDS ON YOU**

REVISIONS			
NO	SYM	ZONE	DATE

GENERAL NOTES

TABULATED DATA:
All Bearings, Distances, and Co-ordinate values given in the TABULATED LISTING are based on FLORIDA STATE PLANE COORDINATE DATA - EAST ZONE (Scale Factor 0.99997942)

STATIONING shown in the tables and elsewhere are based on data computed on FIELD MEASUREMENTS and are NOT SCALE CORRECTED.

PLAN DATA:
Station values shown are based on computed field values for centerline of the R/W (as perpendicular to centerline)

All distances shown on the Plan are FIELD MEASUREMENTS based on adjusted control traverses between NGS Triangulation Stations.

All bearings shown are GRID based on the NGS ties. Distances shown (####) are values obtained from available USCE R/W Maps and are not verified.

ACCURACY
Field and office procedures followed during this survey meet or exceed the Specifications for Third-Order Surveys.

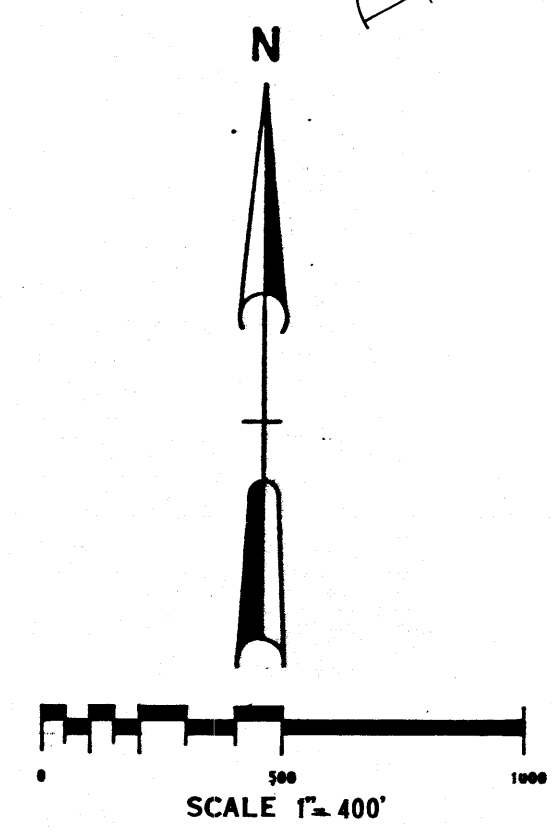
The distances are shown to 3 decimals and angles to a tenth of a second for computation purposes and to avoid round-off problems.

CONTROL DATA
This survey is based on a 2nd-order control traverse run between NGS Stations STAR, DOROTHY, INDIAN, and ALLEN.

Coordinates given on the Plans for all control stations are GRID COORDINATES.

DIRECTION	DISTANCE	NORTHING	EASTING
N 79 14 14.7 E	485.585	964305.100	624973.416
N 79 14 14.7 E	719.120	964439.389	625679.886
S 55 46 09.0 E	143.017	964347.687	625814.665
S 55 46 09.0 E	119.853	964280.246	625713.757
N 79 13 27.9 E	50.010	964289.616	625962.885
N 79 13 27.9 E	1102.141	964495.676	627045.592
N 79 13 27.9 E	1762.717	964825.238	628777.227
N 79 13 27.9 E	147.121	964852.744	628921.753
N 79 13 27.9 E	553.062	964956.146	629465.063
N 49 56 21.2 E	599.987	965161.952	630028.649
N 49 56 21.2 E	599.987	965367.758	630592.235
N 49 56 21.2 E	587.871	965569.407	631144.439
N 40 39 15.0 E	97.515	965617.197	631229.441
N 40 39 15.0 E	599.972	965911.232	631752.424
N 40 39 15.0 E	599.972	966205.266	632275.406
N 40 39 15.0 E	599.972	966499.301	632798.388
N 40 39 15.0 E	636.240	966811.109	633352.984
N 40 39 15.0 E	470.484	967041.782	633763.269
N 40 39 15.0 E	456.947	967363.748	634335.932
N 40 39 15.0 E	662.969	967688.656	634913.828
N 40 39 15.0 E	680.459	968022.135	635504.968

DIRECTION	DISTANCE	NORTHING	EASTING
N 79 13 27.9 E	733.391	964333.583	624655.038
N 79 13 27.9 E	599.987	963882.844	625964.841
N 79 13 27.9 E	599.987	963995.039	626554.249
N 79 13 27.9 E	599.987	964107.214	627143.657
N 79 13 27.9 E	599.987	964219.390	627733.065
N 79 13 27.9 E	599.987	964331.565	628322.473
N 79 13 27.9 E	599.987	964443.740	628911.881
N 79 13 27.9 E	468.340	964531.302	629371.969
N 79 13 27.9 E	529.059	964630.217	629891.693
N 79 13 27.9 E	613.145	964744.852	630494.026
N 40 39 15.0 E	599.988	965038.894	631017.022
N 40 39 15.0 E	249.365	965161.103	631234.388
N 40 39 15.0 E	599.988	965455.145	631757.384
N 40 39 15.0 E	569.988	965734.485	632254.230
N 40 29 15.0 E	649.987	966053.030	632820.809
N 40 39 15.0 E	633.905	966363.694	633373.370
N 40 39 15.0 E	400.082	966559.766	633722.112
N 40 39 15.0 E	245.987	966680.320	633936.534
N 40 39 15.0 E	649.987	966998.865	634503.113
N 40 39 15.0 E	650.537	967317.680	635070.171
N 40 39 15.0 E	310.994	967470.092	635341.257
N 40 39 15.0 E	414.992	967673.471	635702.996



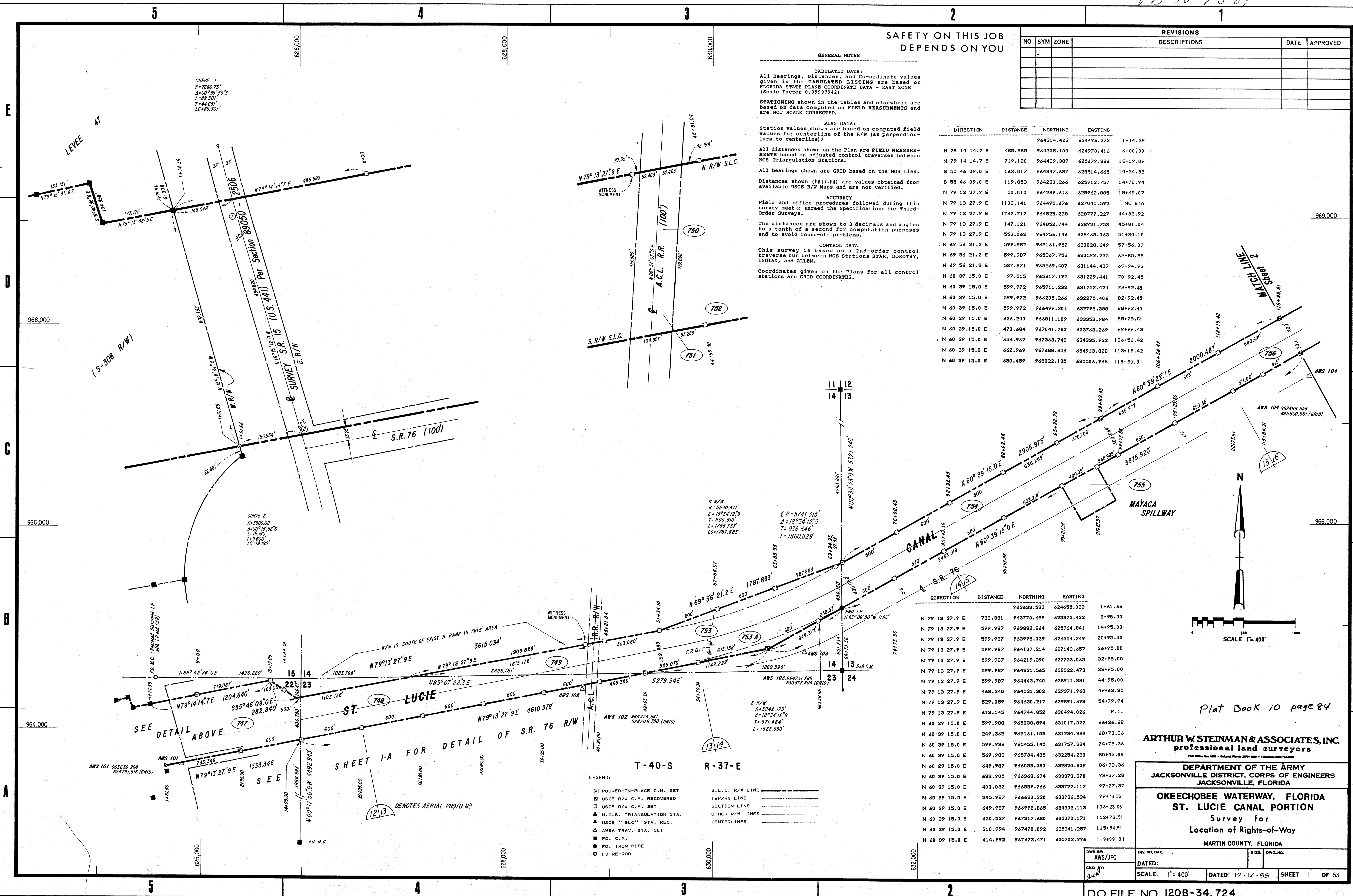
Plat Book 10 page 84

ARTHUR W. STEINMAN & ASSOCIATES, INC.
professional land surveyors

DEPARTMENT OF THE ARMY
JACKSONVILLE DISTRICT, CORPS OF ENGINEERS
JACKSONVILLE, FLORIDA

OKEECHOBEE WATERWAY, FLORIDA
ST. LUCIE CANAL PORTION
Survey for
Location of Rights-of-Way
MARTIN COUNTY, FLORIDA

INV. NO. DAC.	DATE:	SCALE: 1" = 400'	DATED: 12-14-85
SHEET 1 OF 53	DO. FILE NO. 120B-34,724		



- LEGEND:**
- POURED-IN-PLACE C.M. SET
 - USCE R/W C.M. RECOVERED
 - USCE R/W C.M. SET
 - N.G.S. TRIANGULATION STA.
 - USCE "SLC" STA. REC.
 - AWA TRAV. STA. SET
 - FD. C.M.
 - FD. IRON PIPE
 - FD. RE-ROD
 - S.L.C. R/W LINE
 - TWP/RG LINE
 - SECTION LINE
 - OTHER R/W LINES
 - CENTERLINES

T-40-S R-37-E

SHEET I-A FOR DETAIL OF S.R. 76 R/W

12/13 DENOTES AERIAL PHOTO NO.

SEE DETAIL ABOVE

SEE